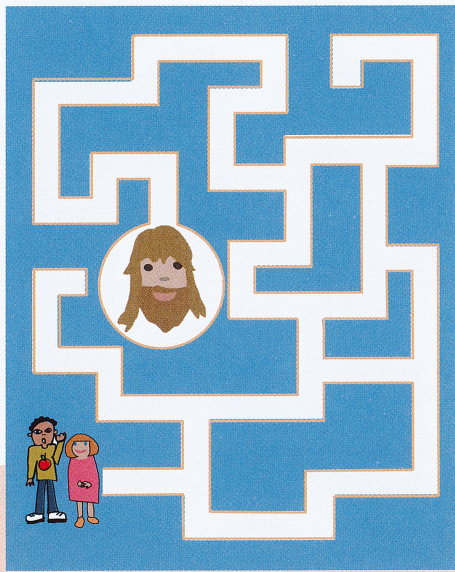




In the GOSPEL TODAY

Maze

We need to stay with Jesus. He will help us to love other people. Can you find your way to Jesus through this maze?

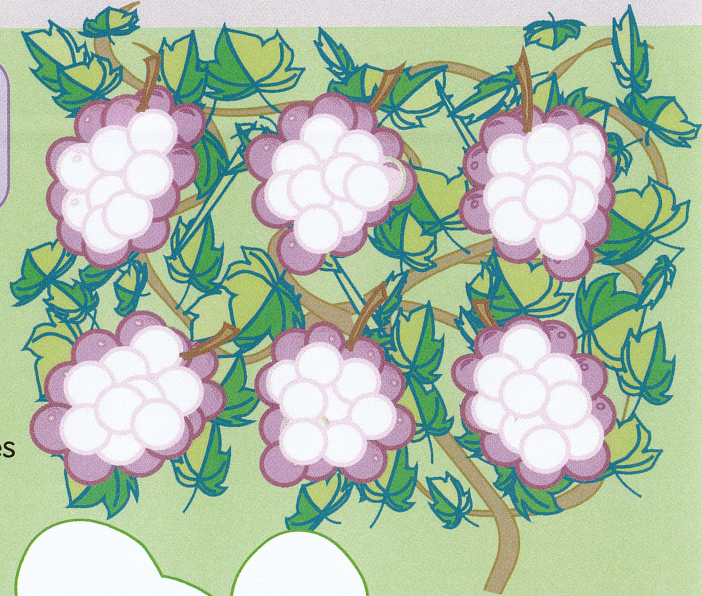


Jesus says that he is like a vine and we are the branches. If we are attached to the vine, we will grow lots of fruit. The fruit we grow is all the good things we do.

I AM THE VINE!

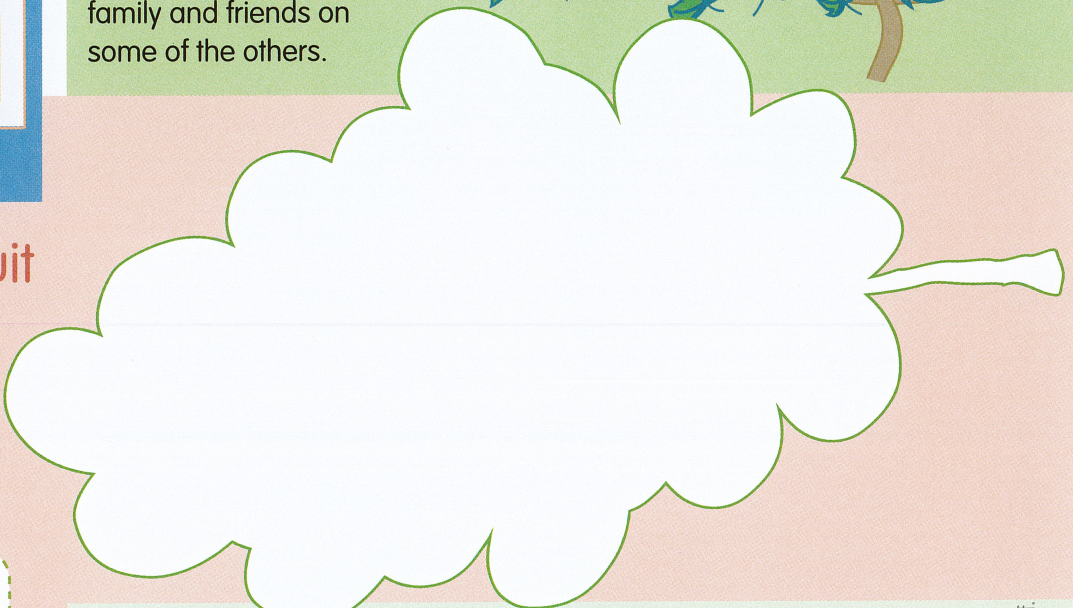
Jesus is like a vine and we are like the bunches of grapes!

Draw your face on one of the bunches of grapes - and the faces of your family and friends on some of the others.



Growing Jesus' fruit

When we love Jesus we try to do what he asks. We are growing Jesus' fruit when we love other people. Draw a picture of you helping someone.



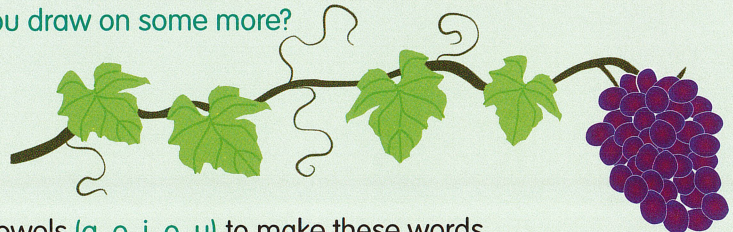
"I will share Jesus' love this week when I..."

A PRAYER TO SAY

Help me to grow good fruit, Jesus. Help me to be kind today. Help me to always trust you and stay in your care. Amen.

That's grape!

This vine only has one bunch of grapes growing on it. Can you draw on some more?



Add vowels (a, e, i, o, u) to make these words.

v_n_ br_nch fr__t gr_p_ l__f

Draw lines from the labels to the right place on the picture.

Answers: That's grape: vine, branch, fruit, grape, leaf.