



### MASS TIMES w/c- 23<sup>rd</sup> January 2022

**Sunday:** 9.30am & 11.30am  
**Monday:** 9.30am FUNERAL  
**KENTIGERN BOISSELLE**  
**Tuesday:** 12PM FUNERAL  
**BRENDAN O'GORMAN**  
**Wednesday:** 9.30am  
**Thursday:** 9.30am  
**Friday:** 9.30am  
**Saturday:** 6pm  
*Church will remain open during the day for private prayer.*

### Contact Information

Parish Priest  
 Rev Dermot O'Neill

Parish Secretary  
 Alison McKinnie

51 Nether Street  
 North Finchley  
 London  
 N12 7NN  
 020 8446 0224

Safeguarding  
 Claudia Clayman  
[finchleynorthsg@safeguardrcdow.org.uk](mailto:finchleynorthsg@safeguardrcdow.org.uk)

### Parish website

Visit our website  
[parish.rcdow.org.uk/finchleynorth](http://parish.rcdow.org.uk/finchleynorth)  
 for all weekly updates and

### CHILDREN'S LITURGY

Until further notice, children's liturgy will be online weekly, via our website.

### REPOSITORY

Open after both Sunday Masses. New products in the Repository information can be found on our website.

# ST ALBAN

Parish Newsletter – 23<sup>RD</sup> January 2022

+ 3<sup>RD</sup> Sunday in Ordinary Time

**First reading:** Nehemiah 8:2-6, 8-10  
**Psalm:** Your words are spirit, Lord, and they are life  
**Second reading:** Corinthians 12:12-30  
**Gospel:** Luke 1:1- 4; 4:14-21

When Paul wrote what we call the First Letter to the Corinthians, he was dealing with a divided community. Many of the members were boasting about the importance of their different gifts. These gifts often manifested a spiritual quality, such as speaking in tongues, prophesying, interpreting, preaching, healing, and so forth. Paul's image of the body is intended to deflate the people's arrogance and put their fellowship with Christ in a new context. The people accept their faith as individuals, but Paul wants them to understand that at baptism, the Holy Spirit draws all believers together into fellowship with Christ as one body. Therefore, no member can be considered greater than another: all are equally relevant because each contributes to the well-being of the whole. Paul's metaphor can be a helpful way for us to think about our role in our own parish communities. As one body, we rely on one another and need to recognize the important role each part in that body plays.

### PARISH COVID PROTOCOLS

Although restrictions are slowly being lifted we are still following our parish protocols. With respect to the current situation with the Omicron variant it is important to ensure the following points continue to be followed in church.

- That people displaying any symptoms of Covid-19 should stay at home and not travel to church or participate in person. Sunday mass will be live streamed.
- Please use the hand sanitiser as you enter the church.
- There is a strong recommendation for people to wear face covering (both nose and mouth) during the act of worship.
- There will be good ventilation and air throughout the building. In this case, because of climate conditions, it is important to wrap up well in the church!
- We encourage people to get vaccinated and have the booster jab when able.

### CONTACTLESS GIVING

There is a device situated in the church porch which enables those who wish to donate in this fashion.

### FOSTERING A SHY MALE CAT

I wonder if anyone would be interested in fostering a shy male cat for a neighbour of mine who lives alone and is poorly in hospital. Her cat means everything to her however is lonely without her so she has given permission for her cat to be fostered until she gets home. If you are interested please contact me by email: [coreilly396@btinternet.com](mailto:coreilly396@btinternet.com)

Many thanks Carole

Parish QR code  
For online donations



## SACRAMENTS

### BAPTISMS:

To arrange a baptism please contact Fr Dermot.

### FUNERALS:

It is the normal procedure to first contact your chosen Funeral Director. They will liaise with Fr Dermot.

### Weddings:

Preparation for marriage:  
Six months' notice is required. Please contact Fr Dermot.

### CONFESSIONS

Saturday from 5.15pm

### REGISTRATION IN THE PARISH

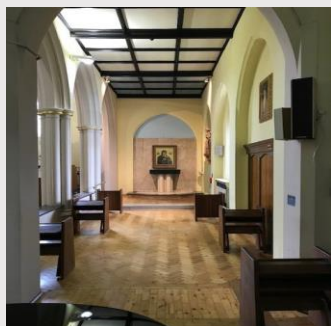
Registration forms are available from the porch. Complete and return to the Presbytery. Thank you.

### ST BANABAS FOODBANK

Accepts donations of food each Saturday between 9.30 & 12.30. They are open for those in need on Monday's 12.30-2pm.  
913 High Road, North Finchley.

### NEWSLETTER

If you wish to receive a copy of our weekly newsletter by email, please sign up by using the website e-Alert or, email the parish office to request.



## ST MICHAEL'S CATHOLIC GRAMMAR SCHOOL - APPLICATIONS FOR SIXTH FORM ENTRY IN SEPTEMBER 2022 OPEN UNTIL 28 FEBRUARY

St Michael's is a place of intellectual exploration and achievement and every year our students achieve outstanding A Level results which enable them to open doors to the most prestigious universities and courses. St Michael's has a large and vibrant Sixth Form which welcomes significant numbers of new students who have studied their GCSEs elsewhere. It is an academic school which offers A Level courses only in the Sixth Form. If you are interested in applying for a Sixth Form place at St Michael's please take a look at the virtual open evening on our website

<https://www.st-michaels.barnet.sch.uk/new-sixth-form-page/virtual-sixth-form-open-evening/>

## OUR LADY OF LOURDES CATHOLIC PRIMARY SCHOOL BOW LANE

Applications are invited for the **Nursery** for the Academic Year starting September 2022. This is for children born between 1<sup>st</sup> April 2019 & 31<sup>st</sup> March 2020. The deadline to return this to the school office is 31<sup>st</sup> January 2022. Please contact the school office or visit the website for an application pack.

## FINCHLEY FOOD BANK COLLECTION

We are collecting for **FINCHLEY FOOD BANK**. Please make sure donations are in date. Essentials include: pasta, rice, tinned foods, cereal, long-life milk & juice, tea, coffee, sugar, toiletries, toilet roll, sanitary towels etc. Thank you - the collection box is in the church porch. 'Whatever you do to the least of my brothers, you unto me' Mt 25:46

## PARENT & TODDLER

The playgroup is now up and running from **9:45am – 11:15am** on Mondays. Further information can be found on our website.

### MASS INTENTIONS AND PRAYERS

<b>Sunday</b>	<b>23<sup>rd</sup> January</b>	<b>9:30am</b>	John & Margaret Came	INT
		<b>11:30am</b>	Patrick Loughlin	RIP
<b>Monday</b>	<b>24<sup>th</sup> January</b>	<b>9:30am</b>	<b>FUNERAL KENTIGERN BOISSELLE</b>	
<b>Tuesday</b>	<b>25<sup>th</sup> January</b>	<b>12pm</b>	<b>FUNERAL BRENDAN O'GORMAN</b>	
<b>Wednesday</b>	<b>26<sup>th</sup> January</b>	<b>9:30am</b>	Kathy Diamond	INT
<b>Thursday</b>	<b>27<sup>th</sup> January</b>	<b>9:30am</b>	Akira Kataoka	RIP
<b>Friday</b>	<b>28<sup>th</sup> January</b>	<b>9:30am</b>	Anne & Stanislaw Lisaj	RIP
<b>Saturday</b>	<b>29<sup>th</sup> January</b>	<b>6pm</b>	John Cuseen	RIP

### All the sick

Charlie Flemming John Came Ann Cuffey

### All the recently departed and their loved ones

Michael Wilde

Brendan O'Gorman Kentigern Boisselle

### and the faithful departed whose anniversaries occur at about this time:

Fr. Bernard McCumiskey Joe Mendonca Anne Loughlin Patrick Loughlin  
John Henry Schmitt

