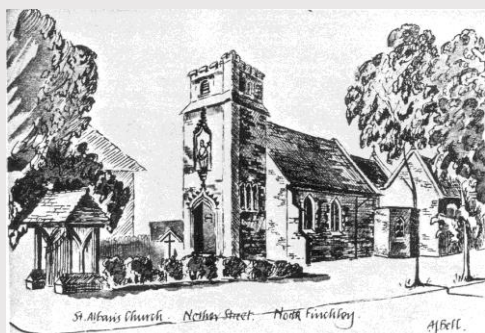


ST ALBAN

Parish Newsletter – 26th June 2022
+ 13th Sunday in Ordinary Time



MASS TIMES w/c- 26th June 2022

Sunday: 9.30am & 11.30am

Monday: 9.30am

Tuesday: 12.30pm **FUNERAL**
MONIKA LEEMING

Wednesday 9.30am

Thursday: 9.30am

Friday: 9.30am

Saturday: 6pm

**Church will remain open during the day
for private prayer.**

Contact Information

Parish Priest
Rev Dermot O'Neill

Parish Secretary
Alison McKinnie
**(Office hours Tuesday & Thursday 9-1
Friday 9-12)**

51 Nether Street
North Finchley
London
N12 7NN
020 8446 0224

Safeguarding
Claudia Clayman
finchleynorthsg@safeguardrcdow.org.uk

Parish website

Visit our website
parish.rcdow.org.uk/finchleynorth
for all weekly updates and

CHILDREN'S LITURGY

Takes place at the Family Mass at 9.30
on Sundays.

REPOSITORY

Open after both Sunday Masses. New
products in the Repository information
can be found on our website.

First reading: 1 Kings 19:16, 19-21
Psalm: O Lord, it is you who are my portion.
Second reading: Galatians 5:1, 13-18
Gospel: Luke 9:51-62

Today's first reading and Gospel show us different reactions to the call to discipleship. When the great prophet, Elijah, designates Elisha to be his successor, the young man asks to see his parents for a farewell, and Elijah is disgusted by his hesitation. Immediately, Elisha severs his ties and follows Elijah. In the Gospel, Jesus invites people to follow him, but they hesitate for one reason or another. Jesus' and Elijah's responses, when taken literally, seem harsh, but they convey a central tenet of discipleship: it must be wholehearted. "No one who looks back is fit for the kingdom of God"

SR MARY PAUL BURTENSHAW PCJ

Sr Mary Paul died very peacefully aged 90 on 14th June at a hospice in Coventry.

A local girl (her sister still lives in East Finchley) she was educated at St Michael's Convent and after graduating in Biological Sciences, taught at St Michael's before becoming Deputy Head and later Headmistress. She continued to serve St Michael's with great distinction as Chair of Governors and the Sisters of the Poor Child Jesus as Provincial Superior. Her funeral will take place at Midday on 5th July at the Catholic Church in Southam, Warwickshire. May she rest in peace.

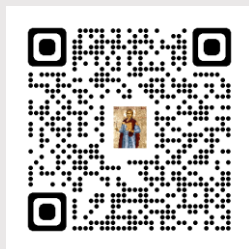
FINCHLEY CATHOLIC HIGH SCHOOL VACANCY

Our school is very highly regarded, heavily oversubscribed and enjoys consistently outstanding examination results. Finchley Catholic is a very rewarding place to work with a supportive collegiate atmosphere. The Governors of Finchley Catholic High School wish to appoint a full-time Chaplain who will work with students, staff, parents, Governors and local clergy to promote and maintain the Catholic ethos and Spiritual values of our School. We are looking for an inspirational individual who will make a significant contribution to the faith journey of our School Community. Finchley Catholic High School strives to provide an outstanding education for all of our young people within a caring Catholic Community where all are known and loved for who they are and supported to be the best possible versions of themselves. Full details can be found in the church porch and on the church website

<https://parish.rcdow.org.uk/finchleynorth/>

Parish QR code

For online donations



SACRAMENTS

BAPTISMS:

To arrange a baptism please contact Fr Dermot.

FUNERALS:

It is the normal procedure to first contact your chosen Funeral Director. They will liaise with Fr Dermot.

Weddings:

Preparation for marriage:
Six months' notice is required. Please contact Fr Dermot.

CONFESSIONS

Saturday from 5.15pm

REGISTRATION IN THE PARISH

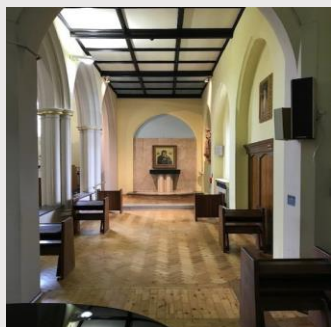
Registration forms are available from the porch. Complete and return to the Presbytery. Thank you.

ST BANABAS FOODBANK

Accepts donations of food each Saturday between 9.30 & 12.30. They are open for those in need on Monday's 12.30-2pm.
913 High Road, North Finchley.

NEWSLETTER

If you wish to receive a copy of our weekly newsletter by email, please sign up by using the website e-Alert or, email the parish office to request.



SAVE THE DATE

16-17th July 2022. Marriage Encounter are hosting a non-residential marriage enrichment weekend. This is a wonderful opportunity for couples to spend time reflecting on, refreshing and rejoicing in their wonderful vocation. For details go to:

[HTTPS://WWME.ORG.UK/WEEKEND/ME-WEEKENDHENDON-16TH-TO-17TH-JULY-2022/](https://wwme.org.uk/weekend/me-weekendhendon-16th-to-17th-july-2022/)

FINCHLEY FOOD BANK

Over 400 people per week are supported with 3 days' worth of food & toiletries by Finchley Foodbank, but food donations have dropped a lot recently. If you're able to add a little extra to your shopping and bring an extra can or two each week, there's a box (& full shopping list) at the back of the church. Many thanks.

PARENT & TODDLER

The playgroup is now up and running from **9:45am – 11:15am** on Mondays. Further information can be found on our website.

MASS INTENTIONS AND PRAYERS

Sunday	26th June	9:30am	June Chan	INT
		11:30am	PEOPLE OF THE PARISH	
Monday	27th June	9.30am	Cornelius O'Connor	RIP
Tuesday	28th June	12.30pm	REQUIEM MASS	
			MONIKA LEEMING	
Wednesday	29th June	9.30am	Bridie Byrne	RIP
	(SS PETER and PAUL)	7pm	Henryk Anusiewicz	RIP
Thursday	30th June	9.30am	Mabel Santos	RIP
Friday	1st July	9.30am	John Rice	RIP
Saturday	2nd July	6pm	Eileen Kelly (Birthday)	INT

Please remember in your prayers All the sick

John Came, Terri McDermott, Mauria O'Connell,
Fr. John Buckley, Martin Murphy

All the recently departed and their loved ones

Bridie Byrne, Monika Leeming,
**Sister Mary Paul Burtenshaw PCJ (Funeral will be held on
Tuesday 5th July at 12pm on 5th July at the Catholic Church in
Southam, Warwickshire)**

**and the faithful departed whose anniversaries occur at about
this time:**