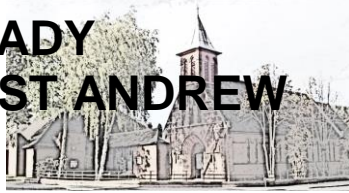




# CHURCH OF OUR LADY IMMACULATE AND ST ANDREW

16 Nightingale Road, HITCHIN, SG5 1QS  
(In the care of the Augustinians of the Assumption)



**Mass Times**  
Saturday 6pm  
Sunday 8.30am, 10.30am, 5pm  
Monday – Saturday 10am  
Reconciliation Saturday 10.30am during Exposition. All Masses are livestreamed [Livestream Mass](#)

## Newsletter No 2086

10<sup>th</sup> February – 17<sup>th</sup> February – Sixth Sunday in Ordinary Time - Year B

### Prayer for those seeking sanctuary

Lord Jesus, we pray for those members of God's family who come here to escape oppression, poverty, persecution, violence, and war. Let them not meet with fear, doubt or suspicion from the local population. May those seeking sanctuary in our country receive a warm and generous welcome as they settle-in and commence their new life. Joyfully, we welcome the many gifts they bring to us. We make this prayer in Jesus' name. Amen.

**Readings** Lev 13:1-2,44-46, Cor 10:31-11.1, Mark 1:40-45

**Entrance Antiphon:** Be my protector, O God, a mighty stronghold to save me. For you are my rock, my stronghold! Lead me, guide me, for the sake of your name.

**Psalm:** You are my refuge, O Lord; you fill me with the joy of salvation.

**Intercession:** We pray to the Lord

**Response:** Lord, hear us!

**Next Week:** Gen 9:8-15, 1 Peter 3:18-22, Mark 1:12-15

**Ramblings** Eleonore Stump reflects that “the leper healed by Jesus must have lived without the touch of another human being for a long time. How welcome the touch of Jesus must have been to that leper! And how overjoyed the leper must have been when he found himself healed!”

Eleonore adds that “Leprosy is not the only thing that severely disfigures and disables a person.”

Leprosy is a concrete example of how sin and evil can disfigure us slowly and persistently unless we are healed, a healing that Jesus yearns to give us so that we become the goodness, light and love of Christ that touches other people's inner lives in a positive way.

The current daily mass readings have told us about the decline in Solomon's faith and trust in God. They prepare us for the impending break-up of his empire. Setting up shrines for other Gods, as Solomon did, is the greatest of insults. Fortunately, the mercy of God is much more powerful so God does not take away everything from Solomon thus allowing for the possibility of those who follow living righteous lives.

Rather than focus on the Leper and his external condition, Jesus invites us to take a serious look at ourselves and at the imperfections, failings and sins of our lives. Only in doing this can we truly empathise with the sick, the marginalised, the excluded with true compassion and feeling, filling us with gratitude for reminding us of our own inner condition and our need of Jesus' healing.

*Almighty God, who wonderfully created us in your own image and yet more wonderfully restored us through your Son Jesus Christ: grant that, as Jesus came to share in our humanity, so we may share in the life of the divinity of Jesus who is alive and reigns with you, in the unity of the Holy Spirit, one God, now and for ever. Amen*

### Diary Dates

#### Sun 11 February



**Coffee Morning** after 8.30am and 10.30am will be provided by **KISS**. All are welcome.

#### Mon 12 February

**9.30am Parent & Toddlers** Hall

\*\*\*\*\*

**6pm & 7.15pm Beavers/Cubs – Scout Hall**

#### Tue 13 February

**10.30am “Tuesday Chat”** Hall

\*\*\*\*\*

**2pm Craft Circle** LCR

\*\*\*\*\*

**7pm Scouts - Scout Hall**

#### Weds 14 February **Ash Wednesday**

Masses will be at 7.30am, 10am and 7.30pm. Ashes will be distributed at all Masses.

\*\*\*\*\*

**10.30am Praise Group** LCR

\*\*\*\*\*

**6pm Feed Up Warm Up** Scout Hall



#### Thurs 15 February

**10.45 – 12.15 Lent Group** with Fr Tom LCR

\*\*\*\*\*

**1pm Italian Club** Hall

\*\*\*\*\*

**6.30pm Brownies - Scout Hall**

#### Fri 16 February

**10.30am Stations of the Cross** Church

\*\*\*\*\*

**2-4pm Hitchin Pantry** Scout Hall

\*\*\*\*\*

**2.30pm Scripture** Fr Andrew Christopher House

#### Sat 17 February

**1-3pm Hitchin Pantry** Scout Hall



There will be a Cafod collection after all masses next weekend (17/18th February) Giftaid envelopes will be available from the collectors.

\*\*\*\*\*

Stations of the Cross will be led on Friday mornings after the 10am Mass during Lent.


 **Prayer diary** 

Opportunities for communal prayer

- Tuesday** 11.30am **Meditation** Emmanuel Centre  
7pm **Eucharistic Service** Church  
To Zoom click on [Eucharistic Service](#)
  - Wednesday** 9.30am **Rosary** Church  
12pm **Charismatic Prayer** UCR
  - Thursday** 6.30pm **Meditation** Emmanuel Centre  
7 – 8pm **Exposition** Church
  - Friday** 10.30am **Stations of the Cross** Church
- All are welcome for private prayer at any time in the church which is open 8.30am - 8pm*

The coffee morning and cake sale last Sunday made **£168.70** for the **Society for The Protection of The Unborn**. Thank you to all that helped and for everyone's support!

We are delighted to say that **Ciara O'Reilly**, our long awaited Sacramental Co-ordinator will be starting her role in the parish this week.

 We pray for **Michael Snell** whose funeral is on **Monday 19<sup>th</sup> February 2024 at 11.30am** and for **Ian McBain** whose funeral is on **Wednesday 21<sup>st</sup> February 2024 at 11.30am**. Ian was a governor at Our Lady's school for many years and a faithful member of our parish, helping with the Children's liturgy and on the finance committee for years. May Michael and Ian rest in peace and rise in glory and may the Lord comfort their families.

**LECTIONARY READINGS FOR LENT**  
Commentary on every Scripture reading from Ash Wednesday to Good Friday by Fr Adrian Graffy, parish priest of Gidea Park and member of the Pontifical Biblical Commission, is available free of charge on [www.whatgoodnews.org](http://www.whatgoodnews.org) Click on

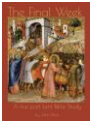
'Scripture Readings' and 'Lent Readings'. The commentaries are also available in book form from Darton, Longman and Todd [www.dartonlongmantodd.co.uk](http://www.dartonlongmantodd.co.uk)

These and other Lent resources are available on the parish website at [Lent Resources](#)

**Lent books** are available in the porch this weekend. My Day by Day adult book is **£1** and the Infant and Junior books are **60p** each. Please place all money in the pamphlets box inside the church door.

If you can, please show your support for the Cardinal's Lenten Appeal. All funds raised go towards projects across our Diocese. Each year, the Diocese uses donations to support the work of our services, such as Marriage and Family Life; Youth Ministry and Education. Funds are also used to support the work of Caritas Westminster, who work for and with some of the most vulnerable people in our Diocese. His Eminence, Cardinal Nichols, has expressed his gratitude to everyone who supports the Appeal, with whatever they can afford. So please take a donation envelope today, for more information. You can use the QR code to make your donation online. There is also a box on the wall by the Porch doors marked up "Lenten Alms". Thank you for your generosity.

**CTH Lent Discussion Groups 2024** The list for these groups is now in the porch to sign up for. The study is **The Final Week** by John Birch. **Fr Tom** will be leading a group from **Thursday 15<sup>th</sup> February from 10.45am – 12.15pm** in the Lower Committee Room. Please sign up on the sheet and email Trish, if you wish to attend this group, who will provide you with the materials for the sessions.




In recent months there have been two new Assumptionist foundations in Kenya. One at Waunifor, 300 kilometres from Nairobi. With the help of parishioners the Fathers have built their own house. At Bura near Mombasa the Assumption is now responsible for the shrine of Our Lady of Good Hope and for the chaplaincy of a college at Taita. The mission in Kenya was only started in 1982 and now has six communities including a novitiate and House of Studies.



**Amoris Laetitia the joy of love 371** *Pastoral Perspectives - Preparing Engaged Couples for Marriage*  
Young people should be helped to perceive how marriage benefits children by offering the best context for their growth and development.

**We are a Safeguarding parish** EduCare (now part of Tes) safeguarding leaflets can be downloaded from our website at <https://parish.rcdow.org.uk/hitchin/diocese/safeguarding-in-our-parishes/>  
**Safeguarding representatives: Trish Bonnett and Maria Greene via 01462 459126**

 If you have a need for prayer, please contact **Mary** on **07759195487** with your prayer intentions

<b>Parish Priest</b>	Fr Justin Kasereka 07438 793351	<b>E-mail:</b> <a href="mailto:hitchin@rcdow.org.uk">hitchin@rcdow.org.uk</a>
<b>Asst Priest</b>	Fr Adams Tatsidjodoung 07438 408350	<b>Website:</b> <a href="https://parish.rcdow.org.uk/hitchin">https://parish.rcdow.org.uk/hitchin</a>
<b>Retired Priest</b>	Fr Tom O'Brien 07547 171570	<b>Parish Tel no</b> 01462 459126
<b>Administrator</b>	Cheryl Saunders cherylsaunders@rcdow.org.uk	press 2
<b>Pastoral Assistants</b>	Ciara O'Reilly starts hopefully soon	01462 459126 press 5
	Trish Bonnett trishbonnett@rcdow.org.uk	press 5